



LANDSCAPE DESIGN IN THE HISTORICAL AREA: HASAN MEVSUF MARTYRDOM AND DARDANOS BASTION

Füsun ERDURAN NEMUTLU^{1*}, Batuhan ÇİZER²

^{1,2} Çanakkale Onsekiz Mart University, Architect and Design Faculty, Department of Landscape Architecture, Çanakkale/Turkey

**Corresponding Author:*
E-mail: fusunerduran@comu.edu.tr

(Received: 13.04.2021; Accepted: 28.05.2021)

a:  ORCID 0000-0002-0104-5994
b:  ORCID 0000-0001-5428-4975

ABSTRACT. The subject of the study is the Dardanos Bastion and Hasan Mevsuf Martyrdom, which are located on the Anatolian coast of the Dardanelles Strait and played an important role in the First World War, the Dardanelles front. In the study, it is aimed to examine the bastion and the martyrdom and to bring a new landscape design proposal to the area in line with today's needs. For this purpose, the current situation of the area has been analyzed with all its environmental characteristics, structural and plant elements have been examined on-site, and problems and needs have been determined. Considering the characteristics of the area, ecological landscape design was made in a contemporary approach. Considering the location of the region to the Dardanelles Strait, a glass viewing terrace was designed for the purpose of viewing the landscape. In the design, attention was paid to the selection of plant species suitable for growing in the ecological characteristics of the region, and a rain garden was designed in the entrance section of the martyrdom area, where rainwater is use defectively. As a result of the study, the plan image and three-dimensional visuals of the proposed landscape design are given.

Keywords: Çanakkale, Cultural historical landscape, Raingarden design, Planting design

INTRODUCTION

Historical areas are residential areas that have been used in different periods, and they change over time. These areas and spaces are historical environments since they have remnants reflecting the culture [1]. However, without adequate protection measures and maintenance-management studies, these areas are sometimes destroyed by nature and sometimes by humans. Historical and cultural sustainability can be ensured by the protection of such important historical environments and the continuous maintenance and management works. By preventing the area from losing its identity, it can be ensured that the events experienced are transferred to the present and the future. For this purpose, they must be adapted to daily needs [2]. Because if historical areas are not used in their original form, the events that took place there are doomed to be forgotten. Historical areas can sometimes be physical open spaces where events take place, and sometimes buildings. Battlefields are one of the most important of these. Because they are the regions where events full of heroic stories are experienced, determining the history of the country, revealing its borders. These are the areas where the war can be best interpreted and perceived today. For this reason, these areas are organized as memorial or memorial parks today. Martyrdoms where the soldiers who died in the war take place also were aimed to keep their memory alive.

The "Dardanos Battery", which is the subject of the study, was used to control the entrance of the strait during the Dardanelles War (18 March 1915), and defeated the

United Fleet. A bullet hit the phone part of the battery; First Lieutenant Hasan and Lieutenant Mevsuf and two privates were martyred. The new commander Captain Muhittin and his soldiers continued to fire and defeated the United Fleet by surprise. "Hasan Mevsuf Martyrdom" was built in memory of the respected names of the two officers who reached the rank of martyrdom [3, 4]. In the study, it is aimed to analyze the area where this heroism lived to protect the entrance of the Dardanelles Strait took place in terms of landscape architecture, and to make a design proposal in accordance with its historical quality and today's understanding. The main reason for the study is that the field is not promoted effectively enough and does not have the aesthetic and functional design it deserves. This work is an idea project. The study can be adapted to different fields with the same qualification. Public institutions can benefit from this project in their future studies.

Historic Sites and Landscape Design

Historical areas in or near the city have a special character. Therefore, they should be designed to reflect the period when associated with the residential area. First of all, it is the basic principle to highlight the original qualities of these areas and to ensure that they are transferred to future generations with their current status. For this reason, their cultural qualities should be exhibited as an open museum while their use is ensured by conservation approaches. Then they will both gain artistic quality and have teaching and recreation functions in the historical place.

Necessary criteria for the landscape designs to be made in the historical area for conservation purposes have been determined by different scientists as follows [5, 6, 7, 8]: 1- It should be easily perceived and sustainable within the framework of protection-use balance. 2- Space solutions should be developed considering the characteristics of the historical texture and the needs of different users. 3- It should provide physical and socio-cultural integrity to form a bridge between the past and the present. 4- Appropriate usage areas that will provide opportunities to revive the socio-cultural function of the historical environment should be created. 5- Existing maintenance and repair deficiencies in historical environments should be determined and deficiencies should be eliminated with interdisciplinary studies. 6-The characteristics of all landscape elements (vegetative and structural) such as form, color and texture should be selected by taking into account the historical identity of the area and the ecology of the region. 7- Safety should be ensured, pedestrian transportation should be a priority and alternative transportation projects should be developed. 8- It should be ensured that the public is informed and conscious about the historical environment. 9- Traditional herbal and structural solutions should be introduced in order for the new buildings to be suitable for the cultural identity. 10- Holistic conservation policies that address the physical and socio-cultural structure should be developed. 11- In order not to disturb the original texture of the traffic flow and parking lot use around the historical area, it should be constructed far from the area. Considering these principles, memorial parks and martyrdoms are designed.

Memorial parks are planned in order to remember the losses suffered by the societies in wars and to keep that feeling alive in a sustainable way [9, 10, 11]. Memorial parks are one of the oldest traditions in retrospect. It is made to commemorate people who could be considered special and important to the community in the past with respect after their death. Today, a little more generalization is made to remember the people who died as a result of important events and disasters and to keep them alive forever [10, 11, 12]. In memorial parks, abstract concepts such as immortality and eternity, as

well as concrete concepts and symbols are used together [13, 11]. These areas teach important lessons while ensuring that the deceased are remembered with respect. They symbolize past events, awaken spiritual feelings and reflect the identity of the city [11].

MATERIALS AND METHODS

The main material of the study is the Dardanos Bastion and Hasan Mevsuf Martyrdom, located on the Anatolian coast of the Dardanelles Strait. The area is at the 12th km of Çanakkale İzmir highway is in it. It is after Kepez town. Dardanos battery, 400m from the shore. It is very well located on a hill overlooking the Bosphorus inside. Bastion island / parcel number: 138/20; Martyrdom island/parcel number: 138/12 - 138/14 (Figure 1).

In the method of the study, first of all, literature review was made; maps and official documents were used. Afterwards, the area was examined in situ, photographed and survey analysis was carried out. In line with this information, the stain plan of the project was prepared and the functional analysis of the uses was made. At the last stage, the preliminary project and final projects were prepared and the plan and three-dimensional visuals of the project were completed. Photoshop-2021, AutoCAD 2021, 3 DS Max 2021 and Lumion 11 programs were used in the study.



Fig. 1. Location and borders of the study area: a: Location in Turkey, b: Location of both areas in the city, c: Dardanos Bastion, d: Hasan Mevsuf Martyrdom (2020)

RESULTS AND DISCUSSION

The study area is on the northern border of the ancient city of Dardanos. It is surrounded by privately owned fields and is cultivated. The city, named after King Dardanos, is the oldest settlement established in the Dardanelles Strait and emerged in 1959. The region is also important because the family tomb of its founders is located in Tumuli. The tumulus is located within the borders of Çanakkale Onsekiz Mart University, Dardanos campus. It has been the subject of many legends. It is understood from these stories that its foundation dates back to 1590 BC. The strait, whose old name was Hellespontos, was named Dardanelles because of this city [3]. Today, Dardanos, which is connected to the Çınarlı village, is a settlement with summer houses. The Dardanos bastion and its battery, which has been declared as a historical site, have an effective view of the Bosphorus on the upper side of this summer settlement. Hasan

Mevsuf martyrdom is located behind this area, closer to the road, surrounded by trees (Figure 2).



Fig. 2. View of the Dardanelles from the Dardanos Bastion (2021)

During the victory of the Dardanelles War (18 March 1915), this region played a vital role in the Turkish defense system, which resisted the allied navy trying to cross the Bosphorus. Hasan Mevsuf Martyrdom was built in memory of the commanders and soldiers who were martyred in these battles. During the strait operation initiated by the Allied navy, the artillery battery stationed here was seriously damaged by the artillery fire of the British ships. Meanwhile, Battery Commander First Lieutenant Hasan, Surveillance Officer Lieutenant Mehmet Mevsuf, Telefoncu 3 privates (Ismail, Mustafa, Mehmet) and officer candidate Halim were martyred and buried here [14].

Data were obtained for the project phase by examining and analyzing the area on site (Figure 3). First of all, it is difficult to reach the region without a private vehicle. Adequate parking is not planned for private vehicles. The road to the cemetery is located at the turn of a sharp ramp and bend, and it poses a danger to those who do not know the way, as there is no side road at the entrance.



Fig. 3. Survey analysis of the area: 1. Dardanos beach; 2. Martyr Hasan Mevsuf Mosque; 3. ÇOMU Dardanos Campus; 4. Kepez Center; 5. Landscape Direction; 6. Intercity İzmir highway; 7. Right wind, southerly direction; 8. Sunning direction; 9. Northwest Direction; 10. North.

The sign at the crossroads and the marble made in the form of addressing the passengers are not very neglected and aesthetic. In addition, it is seen that the two areas are disconnected from each other and there are not enough functions for visitors, and the ramps in the martyrdom are structurally very steep and dangerous (Figure 4).

The absence of suitable and sufficient seating areas and elements in the martyrdom and bastion restricts users from spending a long time in the area. Although there is a masjid in the cemetery part, it is not always open. The cemetery has a very high green space potential. However, in terms of plant design in both areas, there is no interesting plant design that creates an effect in all seasons (Figure 5). The plants were not cared for and pruned. Plants around the Dardanos Bastion and the Monument: *Albizzia julibrissin* Willd., *Durazz.*, *Cineraria maritima* L., *Cortaderia selloana* Asch. & Graebn., *Cupressus macrocarpa* Hartw., *Morus nigra* 'pendula' L., *Olea europaea*, *Platycladus orientalis* (*Thuja*) *Prunus cerecifera* Ehrh., *Pyrus elaeagnifolia* Pall., *Robinia pseudoacacia* 'Umbraculifera' L., *Quercus robur* L., *Viburnum lucidum* Mill.

Plants found in Hasan Mevsuf Martyrdom: *Cedrus atlantica* (Endl.) Manetti, *Cercis siliquastrum* L., *Chamaecyparis lawsoniana* (A. Murray bis.) Parl., *Cupressus arizonica* Greene., *Cupressus sempervirens* L., *Euonymus japonicum aurea* Thunb., *Gaura lindheimeri* Engelm. & A.Gray., *Hedera helix* var. *aurea* Hibberd, *Hibiscus syriacus* L., *Lagerstromia indica* (L.) Pers., *Lavandula* sp., *Platanus orientalis* L., *Robinia pseudoacacia* L., *Rosmarinus officinalis* L., *Quercus trojana* Webb., *Thymus* sp.



Fig. 4. Use of Hasan Mevsuf Martyrdom (2021)



Fig. 5. Landscape Plants potential of Hasan Mevsuf Martyrdom (2021).

There are a large dead space behind the monument built in memory of the martyrs. Space can be gained by pulling the monument back to the site boundary. In addition, more than necessary hard floors are included in the area and visually aesthetic structural materials are not used. Some parts are corrupted, too. It should be considered that the area will be used by individuals from all age groups and disabled people (Figure 6).



Fig. 6. View from Dardanos Bastion (2021).

The view of the Dardanos bastion is very good, especially at sunset, attracting those who want to have a picnic. It was determined that the people who used the soil area on the outer wall of the bastion used for parking the vehicles for this purpose also left their wastes in this area. There is a need for a parking lot analysis and a recreation area in the outer part of the bastion Since the area dominates the landscape and is on a hill detached from the residential area, it is suitable for making a glass viewing area (Figure 7).



Fig. 7. Dardanos Bastion border and parking lot (2021).

The landscape design of martyrdoms and battlefields should be special. Peaceful and aesthetic spaces should be created as a memorial park, allowing spiritual feelings to be experienced. After the literature, analysis and research parts of the study were completed, this information was synthesized and the conclusion was reached, and a preliminary project was carried out by creating a function analysis by making a connection between the uses and creating an integrated monumental martyrdom area (Figure 8). In the preliminary project, the locations of the uses were determined and the main circulations were created.

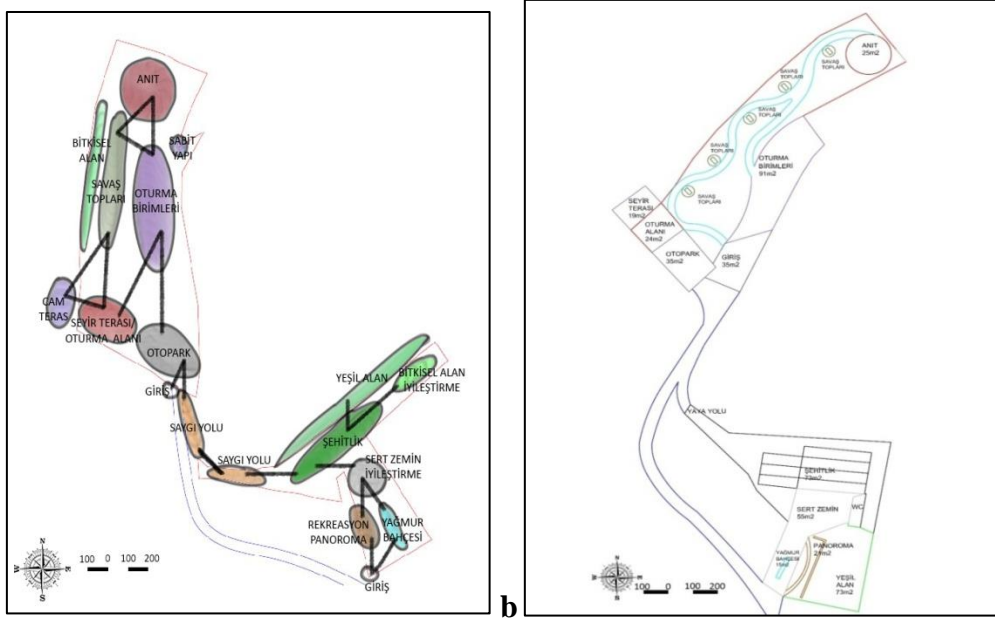


Fig. 8. a. Stain-plan and b. Preliminary project stages.

It was aimed to preserve the spirit of the area in the designs made in Hasan Mevsuf Martyrdom and Dardanos Bastion, which are the study area. While keeping the visitors alive in the historical place, it was ensured that their spiritual feelings were revived and at the same time their recreational needs were met. The fact that there is a gentle sloping road at the entrance of the cemetery area has created the idea that this area is suitable to be evaluated as a rain garden.

Rain garden will not only enrich the ecology of the area at the entrance, but also minimize the maintenance and irrigation needs by designing an aesthetic space for the visitors. In order to accumulate rain water in the area, a slight depression will be created by inclining towards the middle area. Plants that will not have problems in the dry season will be planted on the slopes (Figure 9). We can briefly summarize the benefits of rain gardens as follows [15]: The runoff is not captured and sent to the sewer; the soil is fed by allowing the rain to flow slowly over the surface; groundwater is fed; transpiration and evaporation are increased; drainage problems are solved; It is ensured that the surface flow is cleaned from polluting foreign substances (oil, heavy metals, etc.) and the water quality is increased. For these reasons, it was desired to benefit from rain water by including a rain garden in the project

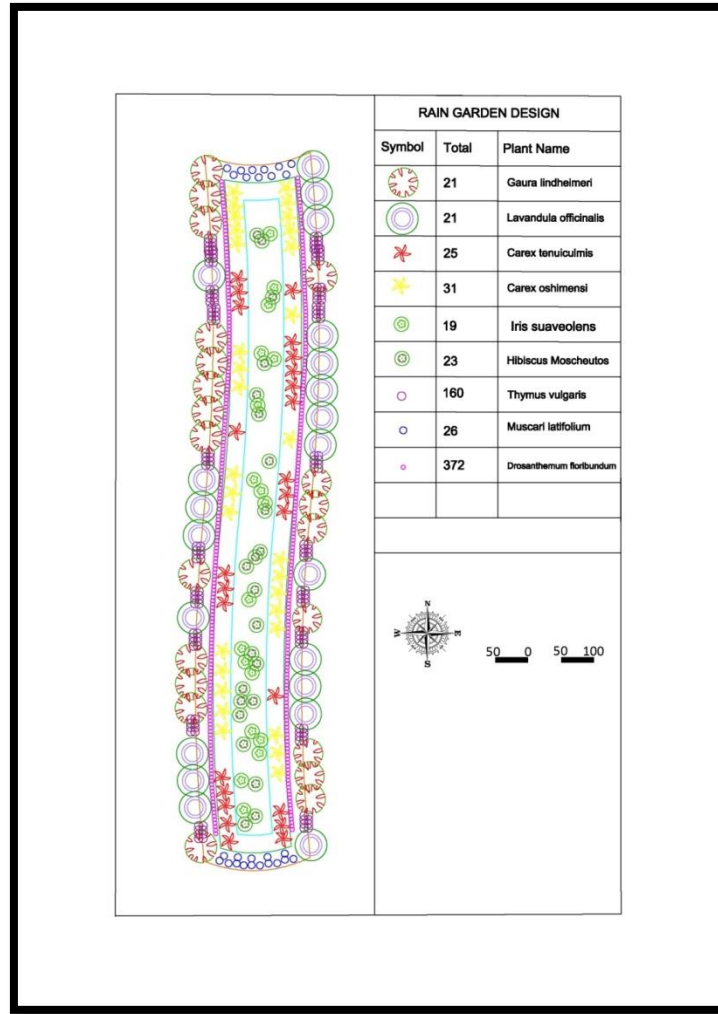


Fig. 9. Plan view and plants of the rain garden

Then, the final landscape design including structural and plant designs was made and the plan view is presented in Figure 10. Since Hasan Mevsuf Martyrdom is a holy place, *Cupressus macrocarpa* was used in accordance with the spirit of the area. With the panorama created in the area, a visual narrative was given to the visitors in which the victory was better understood chronologically. The history has been explained visually on the spot. Hasan Mevruf Martyrdom and Dardanos Bastion remain independent as two disconnected areas. It is aimed to create visual richness for visitors by creating an alle road in order to facilitate access to each other.

In the design of the Dardanos Bastion, the long-lived *Platanus orientalis* tree was used in the central area as a symbol of the struggle and the victory. At the same time, care was taken to include plants that attract attention in all seasons and to benefit from the scents of aromatic plants. A respect road has been designed in the area, which structurally connects the two areas, where visitors can pass from one to the other on foot, and a parking kiosk is included. Finally, a glass viewing balcony has been designed, where the unique view of the Dardanelles can be viewed. In order to better explain the designs made in the Dardanos Bastion and the Martyrdom, their three-dimensional visuals are given in Figure 11 and Figure 12.

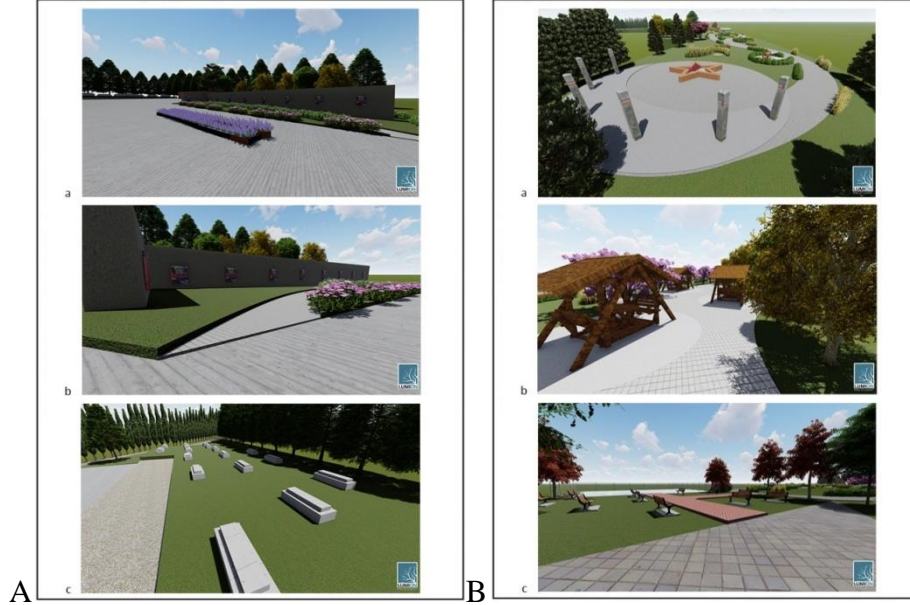


Fig. 11. *A-Martyrdom design; a: Rain garden, b: Presentation panorama, c: Martyrdom. B- Three-dimensional visuals of the Dardanos Bastion martyrdom monument project; a: Monument, b: Semi-closed seating units, c: Outdoor seating*

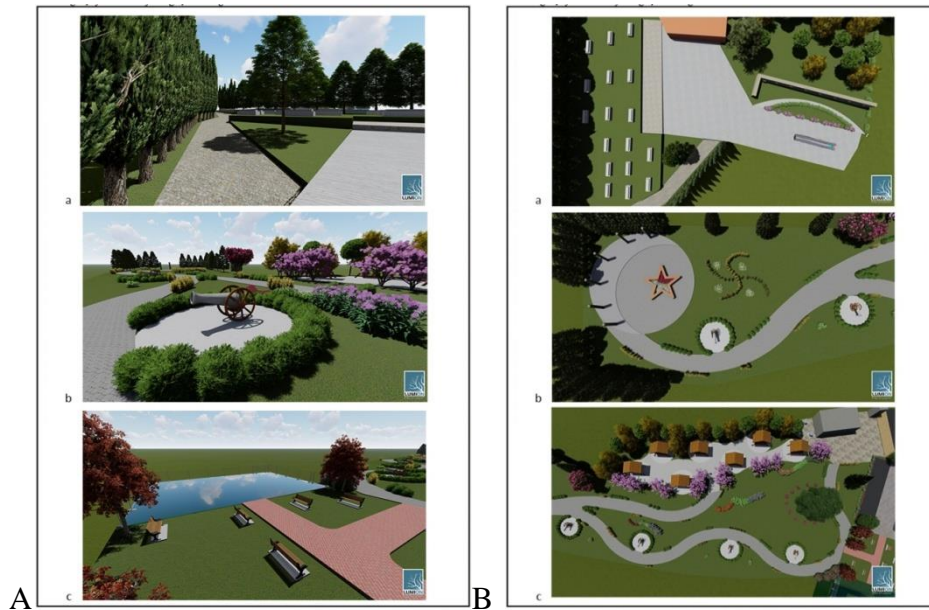


Fig. 12. *A- Path and designs; a: The path of respect from the martyrdom to the bastion, b: Cannons facing the Bosphorus from the bastion, c: Glass terrace. B- Environment*

and Circulation a: The view from the top of the cemetery, b: The road connection and the view from the top of the bastion, c: The view from the top with the surrounding of the bastion.

CONCLUSION

In the Dardanelles wars, martyrs were given by having tough struggles on many different fronts on the shores of the Bosphorus. Visiting these areas not only ensures that history is lived in place, but the martyrs are remembered with respect, and the spirituality of the events is deeply felt. Every Turkish citizen should know these struggles in detail. Thus, the value of the lands owned today will be better understood.

As a result of the study, landscape designs that ensure the preservation of the traces of history and respond to today's needs have been made and it has been ensured that the battlefields are transferred to future generations. It will be possible to attract more visitors to these areas and to become the focus of the city with their aesthetic designs. Current needs and wishes of all segments of the society have been taken into account in the design approach. It is thought that this design can be adapted to different areas of similar nature in the future.

REFERENCES

- [1] Arabacıoğlu, F. P., Aydemir, I. (2007): Tarihi Çevrelerde Yeniden Değerlendirme Kavramı. *Megaron*, 2(4): 204 - 212.
- [2] Çelik, D., Yazgan, M. E. (2007): Kentsel Peyzaj Tasarımı Kapsamında Tarihi Çevre Korumaya Yönelik Yasa ve Yönetmeliklerin İrdelenmesi. *Bartın Orman Fakültesi Dergisi*, 9 (11): 1-10.
- [3] Erduran Nematlu, F. (2019): Kırsal Turizm Potansiyeli Yüksek Bir Bölge: Çanakkale-Dardanos. *International Rural Tourism and Development Journal Uluslararası Kırsal Turizm ve Kalkınma Dergisi*, (E-ISSN: 2602-4462) /IRTAD, 3 (1): 19-24.
- [5] Gençcan, M.İ. (1993): Çanakkale Savaşlarından Altın Harfler. *Bayrak Yayıncılık Matbaacılık*, s: 24-25, İstanbul, Türkiye.
- [6] Groat, L.N. (1988): *Contextual Compatibility in Architecture: An Issue of Personal Taste?* Cambridge University Press, 228-253, New York, US.
- [7] Yazgan, M.E., Erdoğan, E. (1992): Tarihi Çevrelerde Peyzaj Planlama. *Peyzaj Mimarisi Derneği Yayınları*, No:2, s: 205, Ankara.
- [8] Koçan, N., Rüzgar, H. (2016): Kuzguncuk (Üsküdar) Tarihi Doku Koruma ve Yayalaştırma Projesi. *International Journal of Cultural and Social Studies*, 2, 125-134.
- [9] Tırnakçı, A., Aklibaşında, M. (2018): Tarihi Çevrelerde Kentsel Peyzaj Tasarımının Kayseri Mimar Sinan Parkı Örneğinde İncelenmesi. *Erciyes Üniversitesi Fen Bilimleri Enstitüsü Dergisi*, 34(3): 58 - 73.
- [10] Botol, G. (1997): *Sociology of War*. Scientific and Cultural Publications Book, Tehran, Iran.
- [11] Pouya, S., Behbahani, I.H., Pouya, S. (2014): The War Memorial Garden Design. *Arts and Design Studies*, 26 (2): 68-76.

- [12] Demir, S., Pouya, S., Demirel, Ö. (2016): Bazı Anı Bahçelerinin Peyzaj Tasarım İlkeleri Açısından İrdelenmesi. *Journal of Architectural Sciences and Applications*, 1 (1): 12-25
- [13] Behbahani, I.H., Pouya, S., Pouya, S. and Demir, S. (2013): Memorial Garden Design with the Use of Symbolic Receptions of the Plants, *International Conference on Civil Engineering Architecture and Urban Sustainable Development*, 18-19 December, Tabriz, Iran.
- [14] Pouya, S., Pouya, S. and Hedayati, A. (2013): Achieving the Basic Principles for the Memorial Garden Design with the Use of Surveying the Number of Global Memorial Gardens. *7th National Conferences on World Environment Day*, 21 May, Tehran University, Iran: 1-9.
- [15] Körpe, R. (2011): Dardanos Tabyasında Savaş Alanları Arkeolojisi ve Sonuçları. *Çanakkale Araştırmaları Türk Yıllığı*, 95. Yıl Özel Sayısı: 57-90. <http://canakkalesavaslar.comu.edu.tr/dardanos-tabyasinda-savas-alani-arkeolojisi-ve-son.html>). (Access: 30.11.2021).
- [16] Müftüoğlu, V., Perçin, H. (2015): Sürdürülebilir Kentsel Yağmur Suyu Yönetimi Kapsamında Yağmur Bahçesi. *İnönü Üniversitesi Sanat Ve Tasarım Dergisi*, 5(11): 27-37.