

## THE PLACE OF HISTORICAL SPACES IN URBAN OPEN SPACE SYSTEMS: THE EXAMPLE OF IZNIK


Aysun Çelik Çanga<sup>1\*</sup> - Gizem Küçük<sup>2</sup>


<sup>1</sup>Tokat Gaziosmanpaşa University Faculty of Agriculture Department of Horticulture, Tokat

<sup>2</sup>Bursa Uludag University Institute of Science and Technology, Department of Landscape Architecture, Bursa

\*Corresponding Author:

E-mail: aysun.celik@gop.edu.tr

<sup>1</sup>  ORCID: 0000-0001-5289-2176

<sup>2</sup>  ORCID: 0000-0002-7072-910X

**ABSTRACT:** The main purpose of urban landscape planning is; It is to create reinforcement areas that meet the physical, social, psychological and economic needs of the people of the city and at the same time protect the natural and cultural landscape values of the cities. In historical cities, one of the urban equipment areas is historical places. The Iznik district of Bursa is a historical and ancient city that dates back to 316 BC, was the capital of four empires, and is rarely seen in the world. For this reason, it was chosen as the subject of study. In the study, 6 central districts in Iznik district, which have historical places within their borders, were handled, historical places in the neighborhoods were determined, and the current status of indoor and outdoor areas belonging to historical places in terms of quantity was determined. The data obtained; By evaluating the urban open and green spaces in terms of feature-function-standards, the roles of open and green spaces belonging to historical places in the urban open and green space system have been determined and suggestions have been developed. The working method consists of the digitization of the current digital zoning plans in Netcad and Autocad programs, as well as on-site examinations. As a result of the study, it has been determined that historical places have a very important role in the Iznik open and green area system in terms of quantity, but there are inadequacies in terms of quality.

**Keywords:** *Iznik, neighborhood, urban reinforcement area, historical space, open-green area*

### INTRODUCTION

Cities are constantly changing, developing, growing and forming a social character by including the people of the city from past to present. For this reason, cities constitute the research and study subject of many disciplines such as sociology, architecture, landscape architecture [1]. In this study, historical places and urban open and green space systems, which are urban reinforcement areas, are discussed in the example of the city of Iznik.

Urban reinforcement areas are areas reserved for public use in zoning plans. These areas are places where individuals live together and meet their accommodation, transportation, education, worship, health and socio-cultural needs. One of the urban equipment areas is urban open green areas, and it is very important to plan and design it in a way that will enable individuals to benefit from these areas in their daily lives without difficulty. This dimension of urban planning is the subject of urban landscape planning. The main purpose of urban landscape planning; to meet the physical, social, psychological, recreational and economic needs of the people of the city and at the same time to create open and green areas where the natural and cultural landscape values of the cities are preserved.

Open and green spaces are very important reinforcement areas with versatile functions in ecological, aesthetic, physical, social and economic dimensions. According to Erduran and Kabaş [2], these areas add quality to urban spaces, enable the people of the city to connect with nature, create interesting spaces and strengthen neighborly relations. But in fact, the systematic planning of these areas in cities is more important than the presence of open-green spaces in urban spaces. Cities that are not planned systematically affect individuals physically and mentally negatively by separating them from the natural environment [3].

Throughout the adventure of thousands of years since the beginning of humanity, many civilizations have been established, lived and disappeared. All these civilizations identified with the lands they lived on, gave their names to the places they were located, and left their cultures, customs, lifestyles, science and technology in those lands [4]. The cities where the traces and artifacts left in the environments where people and living things lived for centuries continue to exist today are historical cities. Historical cities are instructive and interesting open-air museums that reveal all the details of how people lived in the past. Such cities contain spaces that help reinforce the sense of unity among individuals. The most important element that binds the members of a society to each other is that they have a common past. The most concrete examples they have in their common past are; the place where they live and the cultural values they have [5] Being in such places also creates a feeling of happiness in individuals [6].

Cultural landscapes are formed by loading cultural meanings so that natural resources can be used by people, and are shaped by the interaction between humans and their natural environment. Historical places, which are among the most important cultural landscapes, are an indicator of the cultural richness of a society and are one of the most important components of the cultural landscape [5]. For a place to be a historical place, it must be old and have artistic features. Historical places are special areas that contribute significantly to the quality of the urban environment [7]. Historical places are educational and instructive equipment areas that have the potential to be used for tourism and recreation purposes.

In order for the historical places in the city to continue today and in the future, it is necessary to consider the historical places as a part of the whole of the city. Based on the principle of preserving historical buildings and areas by keeping them alive, all kinds of historical environments in the city should be integrated with the city in physical, functional, social, cultural and economic aspects [8]. Landscape designs around historical places are of great importance in transforming historical places that carry the cultural values of a region from the past to the present into urban focal points [9]. In order for these historical areas not to be lost among the buildings in modern urban development, it is necessary to keep them alive with designs that are integrated with today's needs and possibilities [10].

The Iznik district of Bursa is a historical and ancient city that dates back to 316 BC, was the capital of four empires, and is rarely seen in the world. For this reason, it was chosen as the subject of study. In the study, 6 central districts in Iznik district, which have historical places within their borders, were handled, historical places in the neighborhoods were determined, and the current status of indoor and outdoor areas belonging to historical places in terms of quantity was determined. The data obtained; The roles of the open spaces belonging to the historical places in the Iznik district of Bursa in the urban open space system have been determined, evaluated in terms of the feature-

function-standards of the urban open and green spaces, and suggestions have been developed.

## MATERIAL AND METHOD

This research was carried out in Iznik district of Bursa Province and in the central neighborhoods of the district. Iznik is located at the eastern end of Lake Iznik, of which it bears the same name, in the Marmara Region (Figure 1).



**Fig. 1.** Iznik location

The main material of the study consists of Bursa province Iznik district and 6 central neighbourhood (Table 1) with historical places within its borders and 1/10000 scaled current digital zoning plans for these neighbourhood. Since there is no historical place within the borders of Beyler neighbourhood, it was excluded from the study. In addition, scientific theses, books, articles, photographs and written sources taken from institutions were evaluated as material.

**Table 1.** Central neighborhoods of Iznik

Number	Neighborhood Name	Number	Neighborhood Name
1	Beyler (no historical site)	5	Selçuk
2	Eşrefzade	6	Yeni
3	Mahmut Çelebi	7	Yeşilcami
4	Mustafakemalpaşa		

Research method; It is based on the principle of determining the borders of the current digital zoning plans of Iznik in Netcad and Autocad 2015 program and digitizing the determined borders. With this method, open area, closed area, green area and total area sizes (m<sup>2</sup>) of historical areas were determined. The data determined on the basis of the neighborhood were synthesized in the light of the impressions obtained from the on-site investigations and literature data, and the results were obtained by interpreting them with an expert point of view.

## RESULTS

Iznik, one of the historical cities in Turkey, is a place where many cultures live together. Iznik was home to four important empires (Roman-Byzantine-Seljuk-Ottoman), so it has taken many names throughout history. Some of the names won by İznik; Antigoiea, Antigonía, Eist Nemas, Nicaea, Nicea, Nikea, Nikaia [11]. One of the urban equipment areas in Iznik is historical places. In Iznik, which hosts very important historical places with its rich historical past, most of these works have survived until today. Some of the historical sites are located in the villages of Iznik, and some of them are in the central neighbourhoods (Table 2). With this feature, Iznik is one of the important cultural landscapes in Turkey.

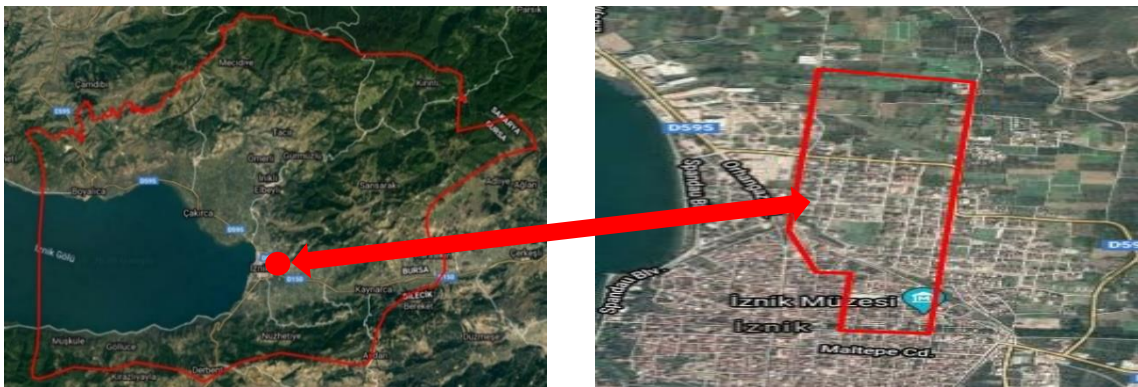
**Table 2. Iznik Historical Places**

<b>Historical Places in Villages</b>		
Bazilika	Beştaş	Çakırca Mound
Underground Burial Chamber	Karadin Mound	Teknekaya
Çiçekli Mound	Elmalı Köyü Mosque	Üyücek Mound
<b>Historical Places in Iznik Center</b>		
Eşreöğlu Rumi Shrine	Halil Hayrettin Paşa Mosque	Basilica Ruin
Eşrefzade Mosque	MahmutÇelebi Mosque	Meydan Bathhouse
HacıÖzbek Mosque	ŞeyhKutbuddin Mosque and Shrine	Candaroğlu Mosque
Topkapı Mosque	2. Murat Bathhouse	Lake Gate
Alaattin Mısri Shrine	Hagios Tryphon Church	Yenişehir Gate
Davud-i Kayseri Shrine	Tile Kilns Excavation	Ayasofya Mosque
İsmail Bey Bathhouse	Huysuzlar Shrine	Kırgızlar Shrine
Ahiveyn Sultan Shrine	Nilüfer Hatun Çini Bazaar	Maiden Tower
The Ramparts	Süleyman Paşa Madrasa	Lefke Gate
Çınarlı Mosque	Roman Theater Ruins	Historical Ruin
İznik Museum	Shrine of Candarlı İbrahim Pasha's Younger Son	Koimesis Church
Istanbul Gate	Yakup Çelebi Mosque and Shrine	

In this study, the historical texture of Iznik has been handled on the basis of the neighborhood, the historical places in each neighborhood and the open spaces around them have been determined and evaluations have been made.

### Eşrefzade Neighborhood

Eşrefzade Neighborhood is 63 km away from Bursa center. The neighborhood does not have a shore to the lake (Figure 2).



**Fig. 2. Location of Eşrefzade Neighbourhood**

The locations of the historical places in Eşrefzade Neighborhood in the neighborhood and the visuals of the historical places are given in Figure 3.



**Fig. 3.** Historical places in Eşrefzade Neighborhood

History of Iznik Walls M.S. It dates back to 258 years. The walls were built during the Roman and Byzantine periods and consist of 4 main gates and 12 secondary gates. Its height is 10-13 m and its length is 4970 meters [12]. It was started to be built during the reign of Emperor Gallienus in order to resist the Gothic raids, its construction and repairs continued during the reign of Marius and Quietus, and its construction was completed during the reign of Claudius Gothicus [13].

Eşrefzade Mosque, one of the historical mosques in the neighborhood, is located at the intersection of Eşrefoğlu Street and Türbe Street in the district center. It was dated as an approximate date by the researchers since the mosque inscription could not be found. The roof is covered with tiles to be close to the real thing. In the northwest corner of the mosque courtyard, only its minaret has survived [13]. The other historical mosque, Hacı Özbek Mosque, is located in the city center of İznik and on the main street. It has the oldest epitaph among the Ottoman Period mosques. It has been repaired many times over six and a half centuries. For this reason, it was exposed to excessive plastering. The signs of history on its walls have been erased. This building, built by Hacı Bin Musa in 1333, is the first mosque of the Ottoman Empire with a dome and an inscription. It has no minaret. It was restored in 2000. Sheikh Kutbettin Mosque and Tomb in the same neighborhood was built by İbrahim Pasha, one of the viziers of Fatih Sultan Mehmet. It was completely damaged during the Greek occupation and its minaret was built separately from the mosque. It is the first tomb with the wall technique of the Ottoman period. The material of the minaret is brick. There is an inscription in Hebrew under the minaret [14].

There are Ahiveyn Sultan Tomb, Alaaddin-i Mısri Tomb, Eşrefoğlu Rumi Tomb, Davudi Kayseri Tomb in Eşrefzade Neighborhood. Among them, Ahiveyn Sultan Tomb has been neglected for many years [13], and only the walls of Alaaddin-i Mısri Tomb have survived to the present day. The only historical bathhouse in the neighborhood is the Ismail Bey Bathhouse, an Ottoman structure built in the 14th century. It has a very important place with its architectural structure in Turkish building art. Today, the top of the bathhouse is covered with a steel roof to protect it from external factors [15].

Nilüfer Hatun Imaret located in Eşrefzade Neighborhood is used as İznik Museum today. It was built by Murat I in 1388 as a soup kitchen in memory of his mother, Nilüfer Hatun. It is one of the most beautiful examples of 19th century Ottoman architecture. It was destroyed during the Greek occupation. It has been restored since 1960 and opened to the public as a museum in the same year. Archaeological artifacts found in and around

Iznik are exhibited in the museum. There are Greek, Roman, Byzantine and Ottoman works in the garden of the museum.

The total area, closed area and open area amounts of the historical areas of Eşrefzade Neighborhood were determined by digitizing the zoning plans in Netcad and Autocad programs, and the obtained information is given in Table 3.

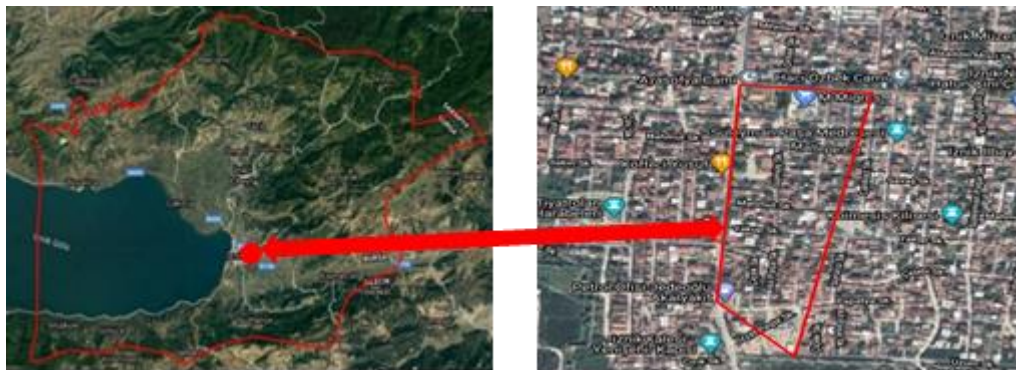
**Table 3.** Amounts of open space in Eşrefzade Neighborhood historical places

Structural Space Usage Style	Name/Number of Structural Area	Total Area (m <sup>2</sup> )	Closed Area (m <sup>2</sup> )	Open Area (m <sup>2</sup> )
Historical artifact	Eşreoğlu Rumi Shrine	1811	569	1242
	Eşrefzade Mosque	259	259	-
	Hacı Özbek Mosque	195	195	-
	Şeyh Kutbuddin Mosque and Shrine	1139	200	939
	Alaattin Mısri Shrine	510	190	320
	Davud-i Kayseri Shrine	136	136	-
	İsmail Bey Bathhouse	307	138	169
	Ahıveyn Sultan Shrine	827	245	582
	The Ramparts	4933	-	4933
	Çınarlı Mosque	542	242	300
	İznik Museum	5505	873	4632
<b>TOTAL</b>		<b>16.164</b>	<b>3.047</b>	<b>13.117</b>
Neighborhood total area (m <sup>2</sup> ):955.550				
Neighborhood Population (Current population in 2021):4782 kişi				

The total area of the historical places in Eşrefzade neighborhood is 16,164 m<sup>2</sup>. Of these areas, 3,047 m<sup>2</sup> consists of closed areas and 13,117 m<sup>2</sup> of open areas. Historical places in Eşrefzade Neighborhood cover an area of 2% of the whole. In this neighborhood, the amount of area per capita from historical places is 3.38 m<sup>2</sup>, and the amount of open area is 2.74 m<sup>2</sup>.

### Mahmut Celebi Neighborhood

Mahmut Çelebi Neighborhood is 62 kilometers from the center of Bursa. The neighborhood does not have a shore to the lake (Figure 4).



**Fig. 4.** Mahmut Çelebi Neighborhood location

The locations of the historical places in Mahmut Çelebi Neighborhood and the visuals of the historical places are given in Figure 5.



**Fig. 5.** Historical places in Mahmut Çelebi Neighborhood

Hagia Sophia Mosque in Murat Çelebi Neighborhood is located in a central point of Iznik. Therefore, it is of great importance for Christians. This building was used both as a mosque and a church [16]. After Orhan Gazi conquered Iznik in 1331, the restoration of this church, which was in bad shape as a result of fire, was made by the important architect of the time, Koca Sinan, while the architectural structure of the church was changed and it was converted into a mosque. This building has been taken under protection today [17] and has been used as a museum and mosque since 2011 [18]. The other historical mosque in the neighborhood is Mahmut Çelebi Mosque and this mosque is in the center of Iznik. The mosque was built by Mahmut Çelebi, the grandson of Çandarlı Hayreddin Pasha, in 1442 and named after him.

Bu mahalledeki tek türbe Halil Hayrettin Paşa Türbesi'dir ve bugünkü şehir mezarlığında bulunmaktadır. Its epitaph is exhibited in Iznik Museum [13]. There are two bathhouses in the neighborhood. These; Meydan bathhouse and Hacı Hamza bathhouse. Meydan Bathhouse is one of the three most important Bathhouse in Iznik and is also known as the Great Bathhouse or Murat I Bathhouse [19]. The Hacı Hamza Bathhouse is also known as the 2nd Murat Bathhouse. The women's section of the bathhouse is used as a tile workshop today, while the men's section is still used as a bathhouse [13].

The total area, closed area and open area amounts of the historical places of Murat Çelebi Neighborhood were determined by digitizing the zoning plans in Netcad and Autocad programs, and the obtained information is given in Table 4.

**Table 4.** Amounts of open areas of historical places in Mahmut Çelebi Neighborhood

Structural Space Usage Style	Name/Number of Structural Area	Total Area (m <sup>2</sup> )	Closed Area (m <sup>2</sup> )	Open Area (m <sup>2</sup> )
Historical artifact	Halil Hayrettin Paşa Mosque	1584	803	781
	Mahmut Çelebi Mosque	463	204	259
	Meydan Bathhouse	465	32	433
	2. Murat Bathhouse	1256	651	605
	Ayasofya Mosque	3484	602	2882
	Tile Kilns Excavation	770	770	-
	<b>TOTAL</b>		<b>8.022</b>	<b>3.062</b>
Neighborhood total area (m <sup>2</sup> ):123.00				
Neighborhood Population (Current population in 2021): 1011 kişi				

The total area of historical places in Mahmut Çelebi Neighborhood is 8.022m<sup>2</sup>. 3.062 m<sup>2</sup> of these areas consists of closed areas and 4.960 m<sup>2</sup> of open areas. Historical places in Mahmut Çelebi Neighborhood cover 5% of the whole. In this neighborhood, the amount of area per capita from historical places is 7.93 m<sup>2</sup>, and the amount of open area is 4.91 m<sup>2</sup>.

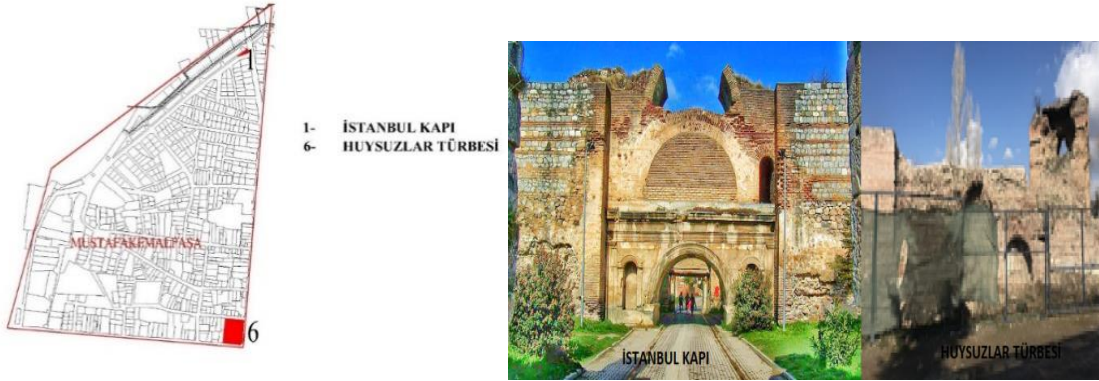
### Mustafakemalpaşa Neighborhood

Mustafakemalpaşa Neighborhood is 63 kilometers from Bursa center. The neighborhood has a shore to the lake (Figure 6).



**Fig. 6.** *Mustafakemalpaşa Neighborhood location*

The locations of the historical places in the Mustafakemalpaşa neighborhood and the visuals of the historical places are given in Figure 7.



**Fig. 7.** *Historical places in Mustafakemalpaşa Neighborhood*

One of the historical places in Mustafakemalpaşa Neighborhood is Huysuzlar Shrine. It is known that the doctor who was interested in child health in the Ottoman period and who did research on this subject, who treated the grumpy children from İznik and even from its surroundings, with different treatment methods, was buried here. Even today, children who are cranky are brought to the shrine. Istanbul Gate, which is the other historical place in the neighborhood, took this name because of its opening to the road to Istanbul in ancient times. It has been repaired in various periods and in the meantime, it has taken its present form consisting of outer, middle and inner doors [13].

The total area, closed area and open area amounts of the historical places of Mustafakemalpaşa Neighborhood were determined by digitizing the zoning plans in Netcad and Autocad programs, and the obtained information is given in Table 5.

**Table 5.** Amounts of open space of historical places in Mustafakemalpaşa Neighborhood

Structural Space Usage Style	Name/Number of Structural Area	Total Area (m <sup>2</sup> )	Closed Area (m <sup>2</sup> )	Open Area (m <sup>2</sup> )
Historical artifact	Huysuzlar Shrine İstanbul Gate	489 -	489	-
TOTAL		489	489	-
Neighborhood total area (m <sup>2</sup> ):516238				
Neighborhood Population (Current population in 2021): 4457 kişi				

The total area of historical places in Mustafakemalpaşa Neighborhood is 489 m<sup>2</sup>. All of these areas are closed areas and there is no open area around the historical place. One of the four main gates of the 4970-meter-long walls that surround the city of İznik in the form of a pentagonal polygon is the Istanbul Gate. Since it is a door, it does not occupy a place in the whole neighborhood as an area. Historical places in this neighborhood cover an area of 0.09% in the whole. In this neighborhood, the amount of area per capita from historical places is 0.109 m<sup>2</sup>, all of which are closed areas. In this neighborhood, the amount of area per capita from historical places is 0.109 m<sup>2</sup> and all of them are closed areas.

### Selcuk Neighborhood

Selçuk Neighborhood is 60 kilometers from Bursa center. The neighborhood has a lake shore (Figure 8).



**Fig. 8.** Selcuk Neighborhood location

The locations of the historical places in the Selcuk neighborhood and the visuals of the historical places are given in Figure 9.



**Fig. 9.** Historical places in Selcuk Neighborhood

Yenişehir Gate and Göl Kapı in Selçuk Neighborhood have been badly damaged as a result of both wars and earthquakes and have undergone many renovations [13]. The lake gate is in a completely destroyed condition today [19]. The Roman Theater in this neighborhood is located 90 m north of the city walls and is very important because it is one of the rare theaters that survived in Anatolia [20]. Hagios Tryphonos Church, located within the borders of the neighborhood, is in ruins today, and its construction date and exact name are unknown [13]. The Kyrgyz Shrine, which is a mixture of Seljuk and Byzantine architectural styles, is partially ruined, but there is no problem in its general appearance [14].

The total area, closed area and open area amounts of the historical places of Selçuk Neighborhood were determined by digitizing the zoning plans in Netcad and Autocad programs, and the obtained information is given in Table 6.

**Table 6.** Amounts of open space of historical places in Selçuk Neighborhood

Structural Space Usage Style	Name/Number of Structural Area	Total Area (m <sup>2</sup> )	Closed Area (m <sup>2</sup> )	Open Area (m <sup>2</sup> )
Historical artifact	Bazilika Ruin	57.477	57.477	-
	HagiosTryphon Church	24.519	24.519	-
	Candaroğlu Mosque	935	462	473
	Göl Gate	-	-	-
	Yenişehir Gate	-	-	-
	Roman Theatre Ruins	7360	-	7360
	Kırgızlar Shrine	3599	107	3492
	Maiden Tower	5476	5476	-
<b>TOTAL</b>		<b>41.889</b>	<b>30.564</b>	<b>11.325</b>
Neighborhood total area (m <sup>2</sup> ):3110328				
Neighborhood Population (Current population in 2021): 5832 kişi				

The total area of historical places in Selçuk Neighborhood is 41,889 m<sup>2</sup>. 30,564 m<sup>2</sup> of these areas consists of closed areas and 11,325 m<sup>2</sup> of open areas. Historical places in Selçuk Neighborhood cover 1% of the whole. In this neighborhood, the amount of area per capita from historical places is 7.18 m<sup>2</sup>, and the amount of open area is 1.94 m<sup>2</sup>.

### Yeni Neighborhood

Yeni Mahalle is 62 kilometers from Bursa center. The neighborhood does not have a lake shore. The location of the neighborhood is given in Figure 10.



**Fig. 10.** Yeni Neighborhood location

The locations of the historical places in the Yeni Neighborhood and the visuals of the historical places are given in Figure 11.



**Fig. 11.** Historical places in Yeni Neighborhood

The Koimesis Theotokos Church was built at the beginning of the VIII century and was repaired many times until 1922. The church was destroyed in 1922, but in 1955 it became visible after being cleared of the rubble and soil [21]. Today it is in a state of ruin. To the east of the church is the Böcek Holy Spring-Baptisterium [13]. Böcek Ayazma consists of a simple domed structure [17]. This structure hosted very important blessings and baptisms during the Byzantine Empire [22]. One of the historical structures here is the Yakup Celebi Mosque and shrine. In addition to its use as a place of worship, the mosque was also used as a soup kitchen and a museum warehouse. It was restored in 1963 and used as a mosque again [13]. The Süleyman Pasha Madrasa, the first madrasah of the Ottoman Period, has also been restored and used as a place where tile and ceramic workshops are exhibited and sold [14].

The total area, closed area and open area amounts of the historical places of Yeni Mahalle were determined by digitizing the zoning plans in Netcad and Autocad programs, and the information obtained is given in Table 7.

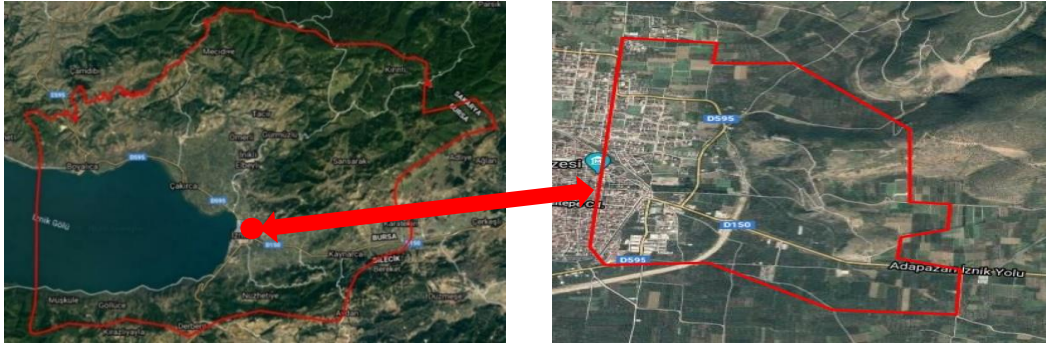
**Table 7.** Amounts of open space of historical places in Yeni Neighborhood

Structural Space Usage Style	Name/Number of Structural Area	Total Area (m <sup>2</sup> )	Closed Area (m <sup>2</sup> )	Open Area (m <sup>2</sup> )
Historical artifact	Nilüfer Hatun Çini Bazaar	1955	1955	-
	Süleyman Paşa Madrasa	761	455	306
	Yakup Çelebi Mosque and Shrine	721	449	272
	Tarihi Run	552	552	-
	Koimesis Church	486	486	-
<b>TOTAL</b>		<b>4.475</b>	<b>3.897</b>	<b>578</b>
Neighborhood total area (m <sup>2</sup> ):2821141				
Neighborhood Population (Current population in 2021): 2531 kişi				

The total area of historical places in Yeni Neighborhood is 4.475 m<sup>2</sup>. Of these areas, 3,897 m<sup>2</sup> consists of closed areas and 578 m<sup>2</sup> of open areas. Historical places in Yeni Mahalle cover an area of 0.16% within the whole. In this neighborhood, the amount of area per capita from historical places is 1.77 m<sup>2</sup> and the amount of open area is 0.23 m<sup>2</sup>.

### Yesilcami Neighborhood

It is 62 kilometers from the center of Bursa. The neighborhood does not have a shore to the lake (Figure 12).



**Fig. 12.** *Yeşilcami Neighborhood location*

The locations of the historical places in the Yeşilcami Neighborhood and the visuals of the historical places are given in Figure 13.



**Fig.13.** *Historical places in Yeşilcami Neighborhood*

Lefke Gate is located in the center of Iznik. Today, 1.80 m of it is under the ground and therefore it has lost its former magnificent appearance [13]. The Yeşil Mosque, which took its name from its blue and green tiled and brick minaret, has a rich stone work and is the most magnificent among the single-domed mosques. It is one of the best examples of the Seljuk minaret tradition. Therefore, it is the symbol of Iznik [23]. There are three shrines in this neighborhood. There is no document showing when the Sari Saltuk Shrine was built and to whom the shrine belongs. The shrine, which was repaired in 1963, is still well-maintained today [13]. The other shrine is the Çandarlı Halil Hayreddin Shrine, and most of its inscriptions have been destroyed. There are twelve shrinestones in the shrine [15]. The other shrine is Abdolvahab Sancaktari Shrine, located on the slopes of Abdullah Hill. Today, those who wish to make a wish read their prayers in this shrine and make their wishes [13].

The total area, closed area and open area amounts of the historical places of Yeşilcami Mahallesi were determined by digitizing the zoning plans in Netcad and Autocad programs, and the obtained information is given in Table 8.

**Table 8.** *Amount of Open Space of Historical Places in Yeşilcami Neighborhood*

Structural Space Usage Style	Name/Number of Structural Area	Total Area (m <sup>2</sup> )	Closed Area (m <sup>2</sup> )	Open Area (m <sup>2</sup> )
Historical artifact	Topkapı Mosque	1049	1049	-
	Lefke Gate	-	-	-
	Shrine of Candarlı İbrahim Pasha's Younger Son	551	551	-
TOTAL		1.600	1.600	-
Neighborhood total area (m <sup>2</sup> ):3951659				
Neighborhood Population (Current population in 2021): 4972 kişi				

The total area of historical places in Yeşilcami Neighborhood is 1,600 m<sup>2</sup>. All of these areas are closed areas. Historical places in Yeşilcami Neighborhood cover an area of 0.040% within the whole. The amount of area per capita from historical places in this neighborhood is 0.32 m<sup>2</sup>.

## RESULT

Cultural landscapes, where the natural, historical and cultural assets of a region are kept alive in a qualified way, raise awareness, contribute to the awareness of future generations, develop a sense of belonging and create an atmosphere of solidarity [5]. Presence/multiplicity and diversity of historical sites is an indicator of the cultural richness of a society.

Today, the uncontrolled growth of cities leads to radical changes in cultural landscapes and causes their extinction. It is necessary to ensure the sustainability of historical places that establish a link between the past and the present. This study was carried out to determine the roles of historical places, one of the most important components of the cultural landscape, in the urban open space system, in the example of the city of İznik. The results obtained from the study are given below.

Historical places in İznik are quite diverse in terms of number and variety of functions (mosque, church, bath, theater, madrasa, tomb, basilica, city wall, gate, bazaar, mound, oven, tower). Some of the historical places in İznik contribute to the intangible cultural landscape today, and some places are used as tile-ceramic workshops and museums. Thus, both the historical structure and the activity in it, tangible and intangible cultural values are carried to the present day.

Due to the fact that it is a historical city, historical places in İznik are scattered almost throughout the city. There are historical places in 6 neighborhoods of the city, only one of them does not. In addition, there are historical sites in its villages and in Lake İznik.

Although the importance given to open and green spaces around historical sites is an indicator of cultural development, there is not enough open space around the historical sites of İznik (Table 9). There are no qualified green areas. In İznik, the share of open spaces belonging to historical places per capita is 9.82 m<sup>2</sup>, which is a very important amount. For this reason, green areas should be increased around the historical places of İznik, and the vegetative design in the green areas should strengthen and emphasize the identity of the historical place. In addition, the landscape designs to be made in these places should be compatible with the local texture.

**Table 9.** *The role of Iznik historical places in the urban open space system*

Neighborhood Name and Population (Person)	Historical Places			Total Area (m <sup>2</sup> /person)	Total Open Area (m <sup>2</sup> /person)
	Total Area (m <sup>2</sup> )	Total Closed Area (m <sup>2</sup> )	Total Open Area(m <sup>2</sup> )		
Eşrefzade Neighborhood 4782 person	16.164	3.047	13.117	3,38	2,74
Mahmut Çelebi Neighborhood 1011 person	8.022	3.062	4.960	7,93	4,91
Mustafakemalpaşa Neighborhood 4457 person	489	489	-	0,109	-
Selçuk Neighborhood 5832 person	41.889	30.564	11.325	7,18	1,94
Yeni Neighborhood 2531 person	4.475	3.897	578	1,77	0,23
Yeşilcami Neighborhood 972 person	1.600	1.600	-	0,32	-
Beyler Neighborhood	There are no historical places in this neighborhood.				
<b>TOTAL</b>	<b>72639</b>	<b>42659</b>	<b>29980</b>	<b>20,689</b>	<b>9,82</b>

It consists of historical places, buildings and their extensions, open spaces. Including only structural designs in historical space designs cannot integrate the building with its surroundings [7]. Historical places that are not included in the open space system in the city of Iznik remain as fragmented, scattered, low-quality open spaces among other reinforcement areas and cannot provide effective service to visitors. Despite the current inadequacies, the rate of historical places in Iznik among other reinforcement areas is not to be underestimated and is 8.29% (Table 10).

**Table 10.** *The share of historical places in the whole neighborhood*

Neighborhood Name	Neighborhood Area (m <sup>2</sup> )	THistorical Place Total Area (m <sup>2</sup> )	The Proportion of Historical Space in the Whole Neighborhood
Eşrefzade Neighborhood	955.550	16.164	%2
Mahmut Çelebi Neighborhood	123.00	8.022	%5
Mustafakemalpaşa Neighborhood	516238	489	% 0,09
Selçuk Neighborhood	3110328	41.889	% 1
Yeni Neighborhood	2821141	4.475	% 0,16
Yeşilcami Neighborhood	3951659	1.600	% 0,040
Beyler Neighborhood	There are no historical places in this neighborhood.		
<b>TOTAL</b>	<b>11.367.216</b>	<b>72639</b>	<b>8,29</b>

In order for the historical places to be permanent and legible, to enrich the urban spaces and to keep the historical places alive, they should be protected in wide spaces and green areas, and should also be considered as a part of the urban open-green area system. Here, an order should be adopted in which the density of visitors, the frequency of use of the area, the diversity of functions of the building, its suitability for carrying capacity so that the actions of the visitors are not restricted, and the natural life and cultural assets in the area are protected.

As a result of unplanned urbanization in Iznik, the integrity of some of the historical places with their surroundings has been lost. The lost visual and aesthetic harmony must be regained.

Historical places constitute the most lively and attractive parts of the cities. However, some historical places in Iznik are neglected and in ruins. These spaces should be restored and included in the urban open space system within wide open and green spaces. With

the protection of historical places in wide open and green areas; An ecological and balanced relationship is established between people, buildings and the past, comfortable and peaceful environments are provided to the users, the integrity of historical places is preserved, historical places are given aesthetic and original value, the attractiveness of the historical place is increased, it adds value to the identity of historical places, adds a meaning, The national and international image of the places is strengthened, the historical place and its surroundings are protected from various environmental problems.

Open areas are common areas of historical places. These areas are designed by landscape architects. Landscape design includes studies based on the organization of all living and non-living elements. In the landscape designs to be made in the open areas of historical places, besides the basic design principles, protection-use balance, ecological data, cultural values should be taken into account, sustainable design principles should be adopted, the existing facilities should be focused on improving, and the spirit of the place should be tried to be reached.

It is an important cultural protection to preserve the authentic texture of historical places by keeping them alive in an integrated way with the present. For this reason, it should definitely take its place among the values that will be preserved and transferred to future generations in the urban development process [7]. As a result, the historical sites in Iznik need to be improved and integrated with the city they are in. In the meantime, historical places should not be handled like an ordinary building, but should be considered as a very important element of the cultural landscape, should be improved, protected within the wide open and green space systems around it and integrated with the city.

## REFERENCES

- [1] Bumin, K. (2010). *Demokrasi Arayışında Kent, Çizgi Kitapevi, Konya, Türkiye.*
- [2] Erduran F., Kabaş, S. (2010) *Parklarda Ekolojik Koşullarla Dengeli İşlevsel ve Estetik Bitkilendirme İlkelerinin Çanakkale Halk Bahçesi Örneğinde İrdelenmesi*". *Ekoloji*, 19(74): 2424-2431.
- [3] Öztürk, B. (2004). *Kentsel Açık Ve Yeşil Alan Sistemi Oluşturulması: Kayseri Kent Bütünü Örneği. Doktora Tezi, Fen Bilimleri Enstitüsü, Ankara Üniversitesi, Peyzaj Mimarlığı Anabilim Dalı, Ankara, Türkiye.*
- [4] Feilden, B. (1982). *Conservation Of Historic Building*. London: Oxford Architectural Press.
- [5] Çelik, A., Erduran Nematlu, F. (2018). *Regional Children's Games In The Cultural Landscape. Recent Researches in Science and Landscape Management. ISBN (10): 1-5275-1087-5, ISBN (13): 978-1-5275-1087-6. P.270-278.*
- [6] Ahunbay, Z. (2004). *Tarihi Çevre Koruma ve Restorasyon. 3. basım, Yapı-Endüstri Merkezi Yayınları, Ali Rıza Başkan Güzel Sanatlar Matbaası, 183 s İstanbul.*
- [7] Çelik Çanga, A., Erduran Nematlu, F., (2020). *Landscape Design For Historic Places. Trends In Landscape, Agriculture, Forest And Nature Science. Cambridge Scholar Publishing, ISBN (10):1-5275-4300-5, ISBN(13):978-1-5275-4300-3. P,146-153.*
- [8] Ardıçoğlu, R. (2014). *Kent İçindeki Tarihi Alanların İyileştirilmesi ve Kentle Bütünleştirilmesi. Yüksek Lisans Tezi. Ankara Üniversitesi, Ankara, Türkiye.*
- [9] Erduran Nematlu F. (2014). *Kentsel Koruma Alanında Bitkisel Tasarım: Çanakkale Turkey Örneği. COMU Journal of Agriculture Faculty, 2(1): 91-99.*
- [10] Öztürk E., Erduran Nematlu F. (2016). *Tarihi Kültürel Peyzaj Tasarımı Çanakkale*

- Müstahkem Mevkii Örneği. COMU Journal of Agriculture Faculty, 4(1): 61-67.
- [11] Tuğlacı, P. (1985). Osmanlı Şehirleri. Milliyet Yayınları, İstanbul.
- [12] Anonymous, (2003). T.C. Turizm Bakanlığı Tanıtma Genel Müdürlüğü, Türkiye'nin Turizm Değerleri Cilt 2, Birinci Baskı, Ankara.
- [13] Yalman, B. (2003). İznik. Uniform Matbaacılık. İstanbul.
- [14] Usta K. (2005). İnanç Turizmi Potansiyeli Açısından İznik'in Değerlendirilmesi Yüksek Lisans Tezi Balıkesir Üniversitesi Sosyal Bilimler Enstitüsü Balıkesir.
- [15] Anonymous, (2022A).  
www.kulturportali.Gov.Tr/Turkiye/Bursa/GezilecekYer/Alaaddin-İ-Misri-Turbesi (15. 09. 2022).
- [16] Camcı, H. Ö. (2008). İznik'te Tarihi Keşfe Çıkarken, "Gezgin Dergi" 14.Sayı. (<https://gezginderji.com>).
- [17] Eyice S.(1991). Ayazma, "Türkiye Diyanet Vakfı İslam İslâm Araştırmalar Merkezi İslam Ansiklopedisi", Cilt Iv, Ankara: Diyanet Vakfı Yayınları, 1991, S. 230.
- [18] Kaya, Ö. (2015). İznik, "Gezgin Dergi", Sayı 102. (<https://gezginderji.com>).
- [19] Şen, T. (1998). İznik'in Tarihi Coğrafyası. Yayınlanmamış Yüksek Lisans Tezi, Marmara Üniversitesi, Ortadoğu Ve İslam Ülkeleri Enstitüsü, İstanbul.
- [20] Anonymous, (2022B) Bursa İl Kültür Ve Turizm Müdürlüğü,  
www.Bursakulturturizm.Gov.Tr/Eklenti/10543,İznik-Roma-Tiyatrosu-Kazisi 2012(25. 05. 2022).
- [21] Gönenç S. Ç. (1993). İznik'te Bizans Dönemine Ait Yapıların İncelenmesi Üzerine Bir Araştırma", Yayınlanmamış Yüksek Lisans Tezi, Yıldız Teknik Üniversitesi Mimarlık Fakültesi Röleve Restorasyon Ana Bilim Dalı, S. 73.
- [22] Şahin, M. (2014). İznik Koimesis Kilisesi Ve Böcek Ayazma Üzerine, Bursa'da Zaman Dergisi, 10,102-104.
- [23] Özgören, İ., (2011). Dört Kapı Dört Medeniyet, İznik, bursa İl Özel İdaresi, 195 206.